



U.S. DEPARTMENT OF
ENERGY

OFFICE OF
**ENVIRONMENTAL
MANAGEMENT**



Environmental Management Cleanup Forum

Presented by
Joe Legare
Vice President, N3B Los Alamos



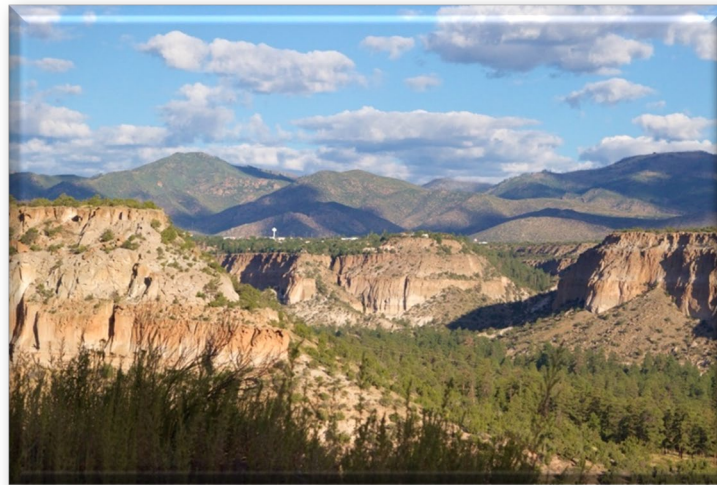
ENVIRONMENTAL MANAGEMENT
SAFETY ♦ PERFORMANCE ♦ CLEANUP ♦ CLOSURE

September 29, 2021



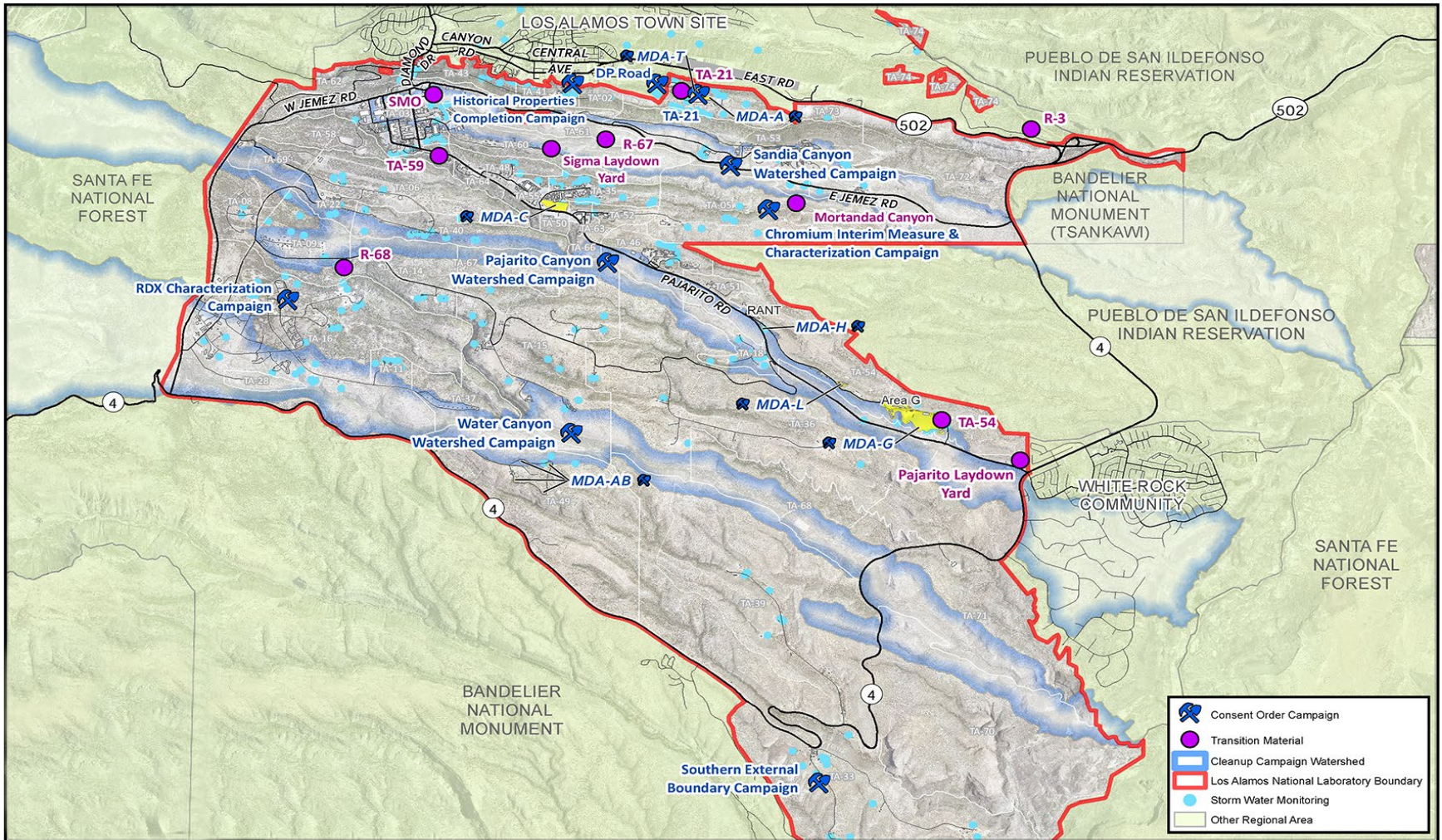


Los Alamos Legacy Cleanup Contract





Site Map: Work Focus Areas



- Consent Order Campaign
- Transition Material
- Cleanup Campaign Watershed
- Los Alamos National Laboratory Boundary
- Storm Water Monitoring
- Other Regional Area





Chromium Interim Measure and Characterization

✓

Achieved fully operational status for the interim treatment system

2

New wells under construction to further characterize the plume

>97%

Uptime, exceeding target of being operational 80% of the time

118M

Gallons of contaminated water treated in FY21, enough water for approximately 3,600 residents annually

Surface Water & Storm Water

301

Number of surface water and storm water monitoring locations

890

Surface water infrastructure inspections

30

Number of storm water controls built in 2021

92

Surface water and storm water samples collected

Groundwater

158

Groundwater monitoring locations

3,770

Groundwater samples collected





Middle DP Road

- Planned completion of environmental sampling activities and excavation of contaminated materials
- Packaged 2,354 cubic meters (m³) of soil and debris characterized as low-level radioactive waste

Material Disposal Area (MDA) T*

- Installed 3 moisture monitoring wells to perform MDA T Moisture Monitoring Pilot Studies at TA-21
- Collecting data to support final design of the MDA T Moisture Monitoring System

MDA C* and MDA L*

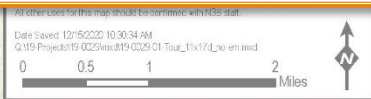
- Collected 232 vapor samples from MDA C and MDA L
- Submitted MDA C Corrective Measures Evaluation Report to New Mexico Environment Department

Transition Materials

- Remediated transition materials at 9 sites
- Shipped soil, metal, debris, and water off-site for disposal
- Completed project in September 2021

Southern External Boundary*

- Worked in 3 canyons covering 6,457 acres
- Collected 1,031 samples at 361 locations
- Drilled and installed 3 vapor sampling wells
- Excavated 657 m³ of contaminated soil and debris
- Transported 413 m³ offsite for disposal to date



All other uses for this map should be confirmed with NRE data

Data Saved: 12/15/2021 10:30:34 AM
© 1994 Project 15 0225/rev 01/19 0225 01 Tour_1fx17/L/ no em med



*Consent Order Campaigns





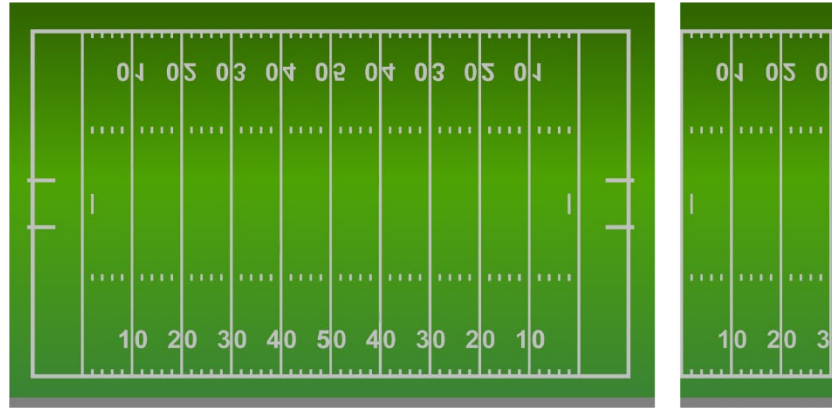
- 31 Transuranic (TRU) waste shipments to the Waste Isolation Pilot Plant (WIPP) (213 m³)
- 1,254 m³ Low-level radioactive waste
- 54 m³ Mixed low-level radioactive waste
- 12 m³ Hazardous waste
- 79 m³ Other waste streams (non-hazardous, solids, New Mexico Solid Waste)
- 447 m³ Transition materials (soil, metal and debris)
- 257K Transition water (gallons)

m³ = cubic meters





Total Volume of Waste Shipped*: FY21 = 2,059 m³



Filling up 1.35 football fields 1-foot deep



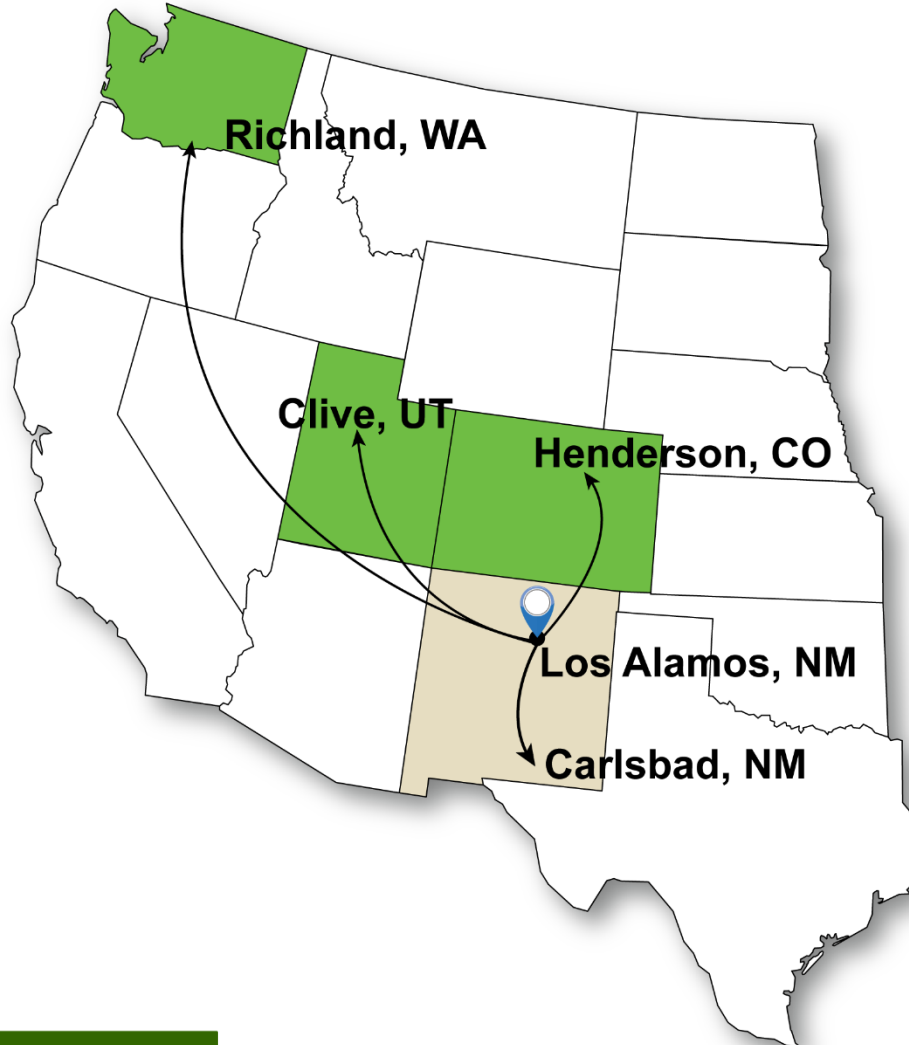
10,885 55-gallon drum equivalents

*Does not include water shipped





Primary Waste Off-site Disposal Facilities





Consent Order Milestones Met

FY18*

10 of 10

FY19

18 of 19

FY20

16 of 16

FY21

13 of 13 DOE proposed milestones

**57 of 58
Milestones Met**

*Under N3B's contract (May – Sept 2018)

