



N3B Community Contributions Program

October 25-26, 2023

Kristin Henderson, Stakeholder Affairs Lead

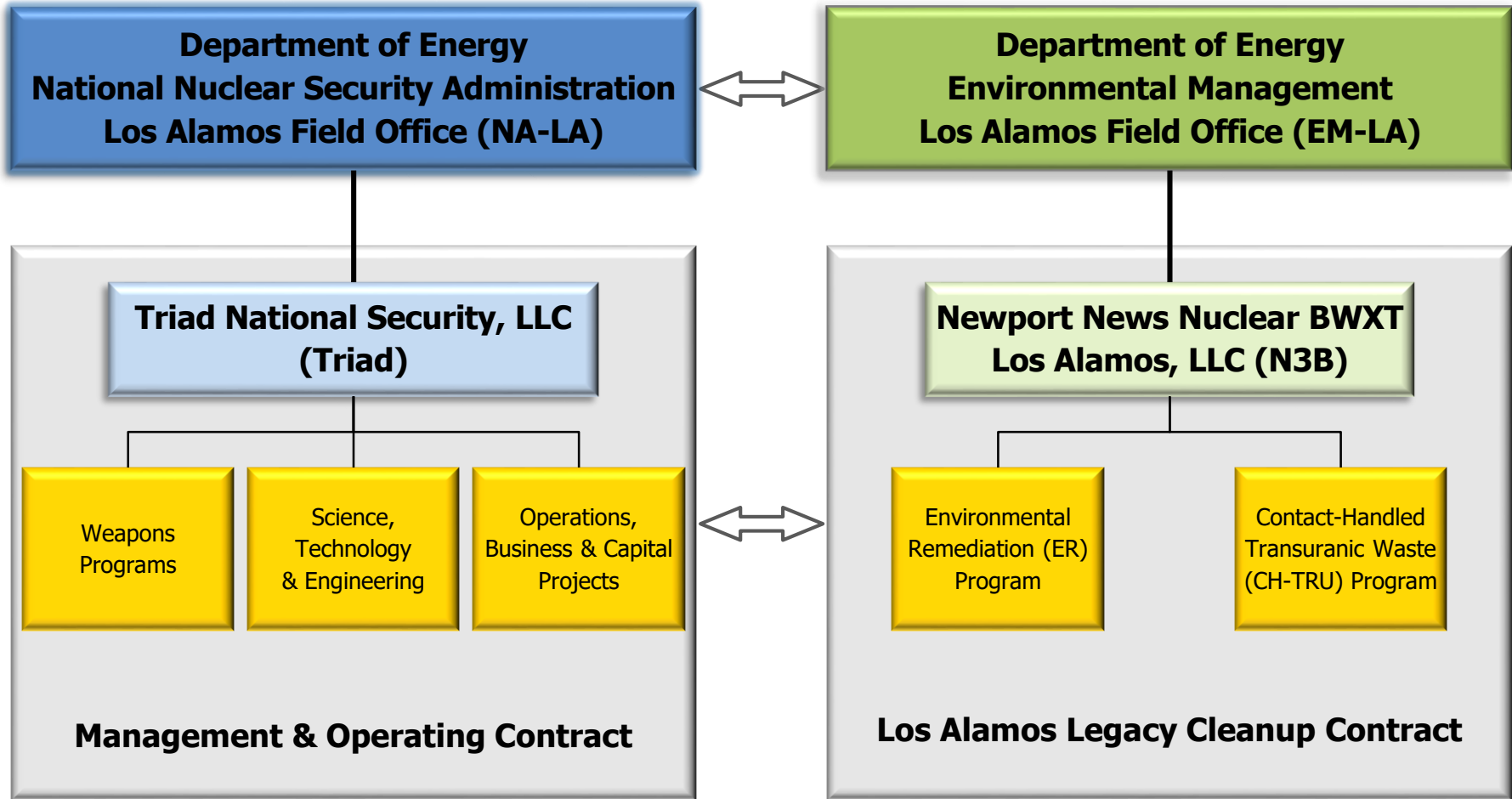
Todd Nelson, External Affairs Lead

Newport News Nuclear BWXT Los Alamos

1. N3B Mission
2. N3B Community Commitment & Outreach
3. Community Contribution Program
4. Questions



The U.S. Department of Energy in Los Alamos





Parent Companies



Critical Subcontractors



N3B is a limited liability company formed to manage the Los Alamos Legacy Cleanup Contract for the U.S. Department of Energy's Environmental Management Los Alamos Field Office.

Mission

To manage and execute the Los Alamos Legacy Cleanup Contract safely, securely, compliantly and efficiently to the satisfaction of our customers and stakeholders while adhering to disciplined operations principles.



*Monitor
groundwater
and surface
water*



*Clean up waste
sites and
demolish
contaminated
buildings*



*Excavate,
treat,
package
and ship
waste*

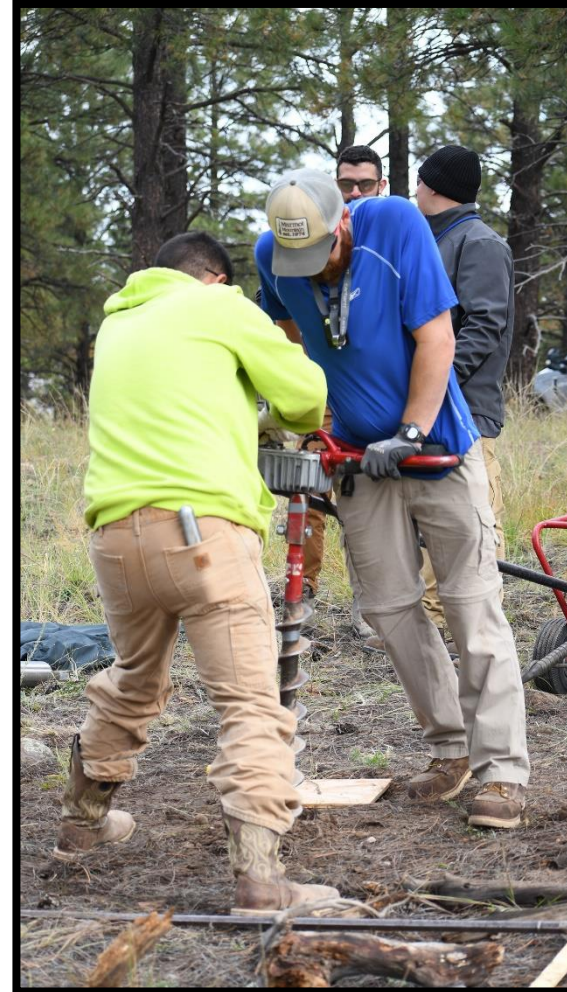
Driving Cleanup | Honoring the Past | Strengthening Communities

- ✓ Treated more than **420** million gallons of groundwater contaminated with hexavalent chromium.
- ✓ Installed **136** structures to mitigate potential migration of contaminated storm water.



Driving Cleanup | Honoring the Past | Strengthening Communities

- ✓ Investigated and remediated more than **280** contaminated waste sites.
- ✓ Dispositioned nearly 7,000 cubic meters of soil and debris.
- ✓ Collected more than 11,600 soil and sediment samples.



Driving Cleanup | Honoring the Past | Strengthening Communities

- ✓ Completed **165** transuranic waste shipments (526 cubic meters) for safe, permanent safe storage in southern New Mexico
- ✓ Shipped off-site more than 12,000 cubic meters of mixed/low-level radioactive waste



Driving Cleanup | Honoring the Past | **Strengthening Communities**

We give back five percent of our fee earned over the life of our contract to the Northern New Mexico community. The amount varies year to year.



Two-year Apprenticeship Program with Northern New Mexico College

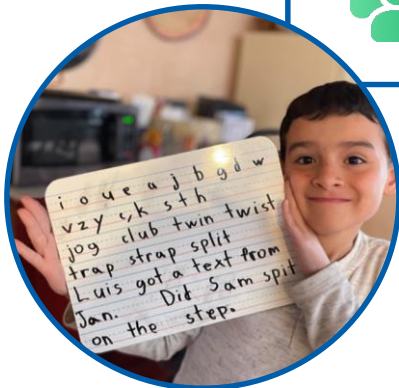
16-week Boot Camp Program with University of New Mexico – Los Alamos



Community Commitment – Contributions



	Education	50%
	Health and Human Services	20%
	Arts & Culture	20%
	Civic, Community & Economic Development	10%



501(c)3 or 170(c) tax-exempt organizations

Requests will be evaluated based on:

- ✓ Orientation toward STEM or STEAM education.
- ✓ Ability to address the needs of underserved populations.
- ✓ Ability to serve the most people possible.
- ✓ Participation of N3B employees and their families in the organization.
- ✓ Demonstration of a genuine community need with limited options for alternate funding.
- ✓ Ability to provide recognition for N3B, as well as its community partners and partnerships.



What we typically won't fund

- Recurring or multi-year projects.
- Individuals or individual needs.
- Political or religious organizations.
- Fraternal organizations (except their fundraisers to support nonprofits).
- Advertising expenses.
- Professional meetings or conferences.
- Travel, film or television production or programming.
- Overhead and administrative expenses, emergency funds.
- Individual schools, sports events or athletic groups, extracurricular school activities.
- Fairs or parades.

Organizations that discriminate on the basis of age, race, sex, religion, national origin, disability, family status, receipt of public assistance, sexual orientation or gender identity.

How to submit a request

1. Submit electronically at: <https://n3b-la.com/community-contributions/>
2. Requests must:
 - Be submitted through official channels of the organization.
 - Clearly identify the requesting organization.
 - Be endorsed by a senior representative of the organization.
3. There is no deadline.
4. The review process may take several months.
5. Requesting organizations will be notified when their request is received and when a decision is made. We may also call/email with questions.



1. Description of the organization and its mission, goals and objectives.
2. Specific purpose of the request.
3. Amount requested.
4. Other funding sources and the amounts received.
5. Description of how N3B's donation will be publicized.
6. High-resolution copy of the organization's logo.
7. Current balance sheet and annual budget.
8. Principal's contact information.
9. Copy of the organization's Internal Revenue Service (IRS) letter of determination and W-9.
10. Completed copies of N3B vendor forms.





Contribution [guidelines](#) and [FAQs](#)

Email us: N3BOutreach@em-la.doe.gov

Website: www.n3b-la.com/community-contributions

N3B *Los Alamos*